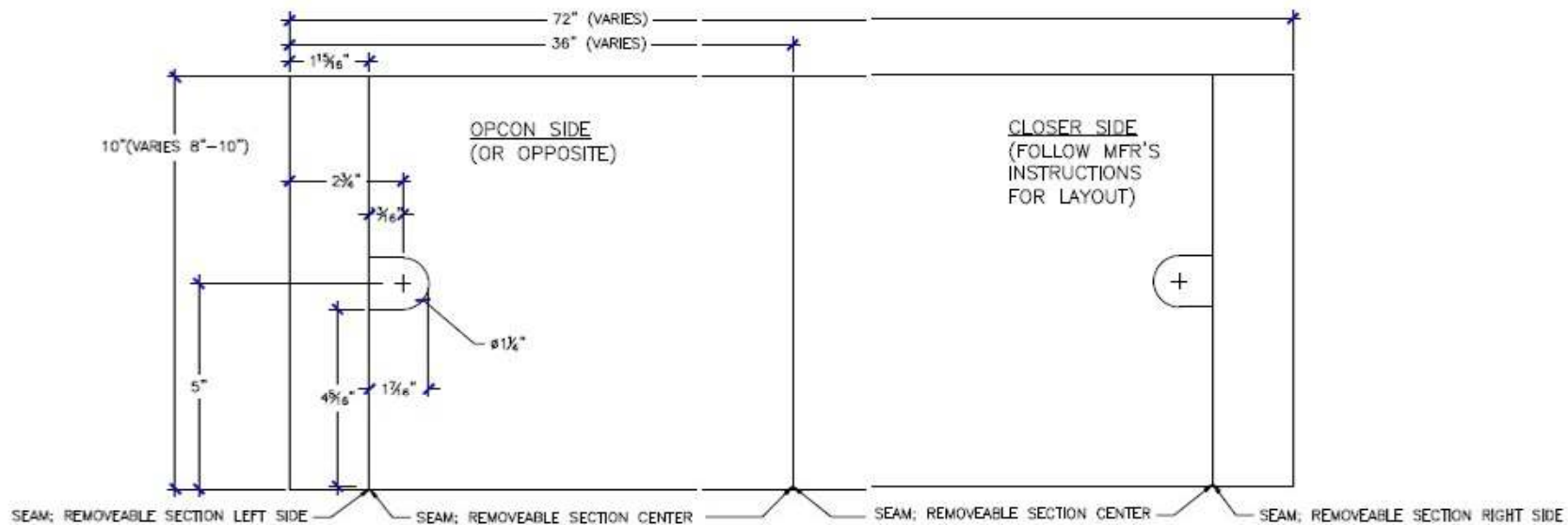


FLAT (TRANSITION) THRESHOLD

TRANSITION TO TILE, STONE, ETC.

USING COMBINATION OPCON CONVERTER AND MANUAL CLOSER PAIR FOR CENTER HUNG DOORS (INSTALLED BETWEEN JAMBS)



PLAN VIEW

SCALE = 1:4

NOTES:

1. MATERIAL THICKNESS VARIES FROM 1/8" TO 1/4"
2. PREPARE THRESHOLD WITH "D" SHAPE HOLE FOR REMOVAL AT SPINDLE
3. BOTH SIDES OF THRESHOLD ARE REMOVABLE; INSTALL & SEAL WITH SILICONE ONLY
4. DO NOT SCREW INTO CEMENT CASE. SEAL WILL BE COMPROMISED