

OPCON

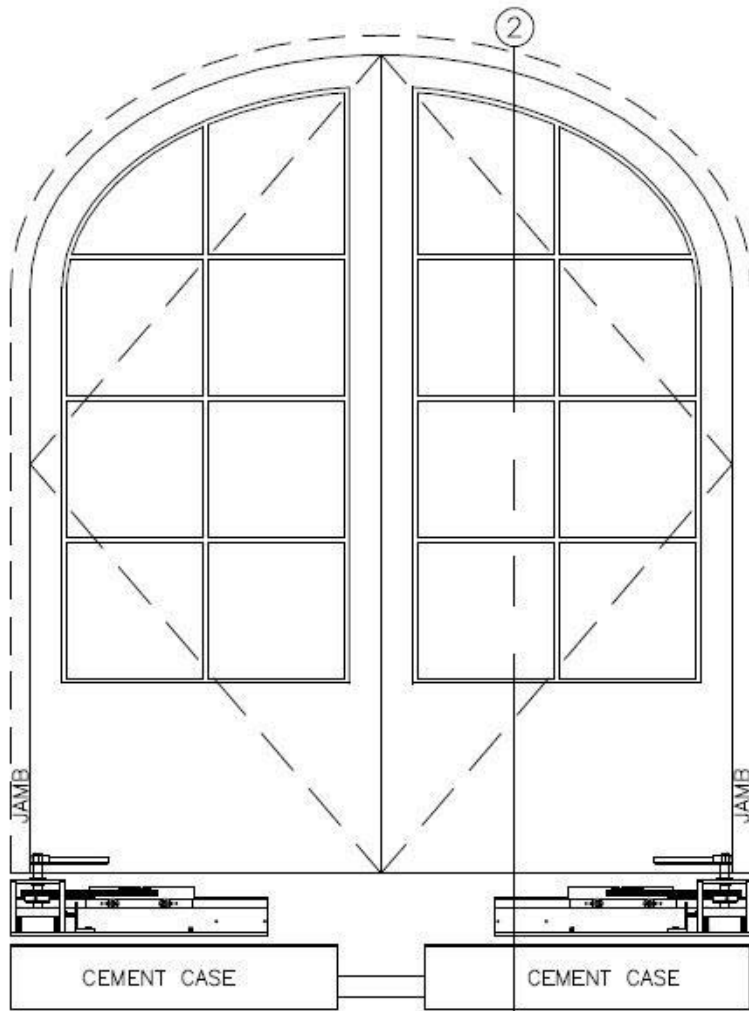
• CONVERT • CONCEAL • CONNECT

www.opconusa.com

(760) 720-3902

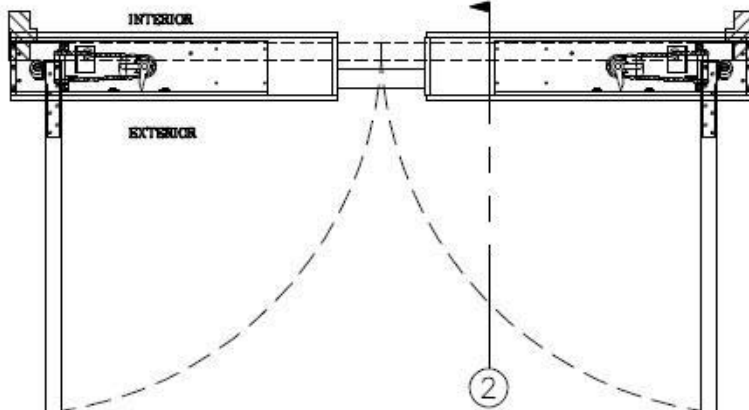
ARCH TOP (HISTORIC) PAIR OF DOORS WOOD, BRONZE, ETC.

BUTT HUNG (HINGED) OFFSET WITH STANDARD OFFSET BOTTOM ARMS



CEMENT CASES SHOWN BELOW SLEDS FOR CLARITY

FRONT ELEVATION ③ SCALE = 1:20

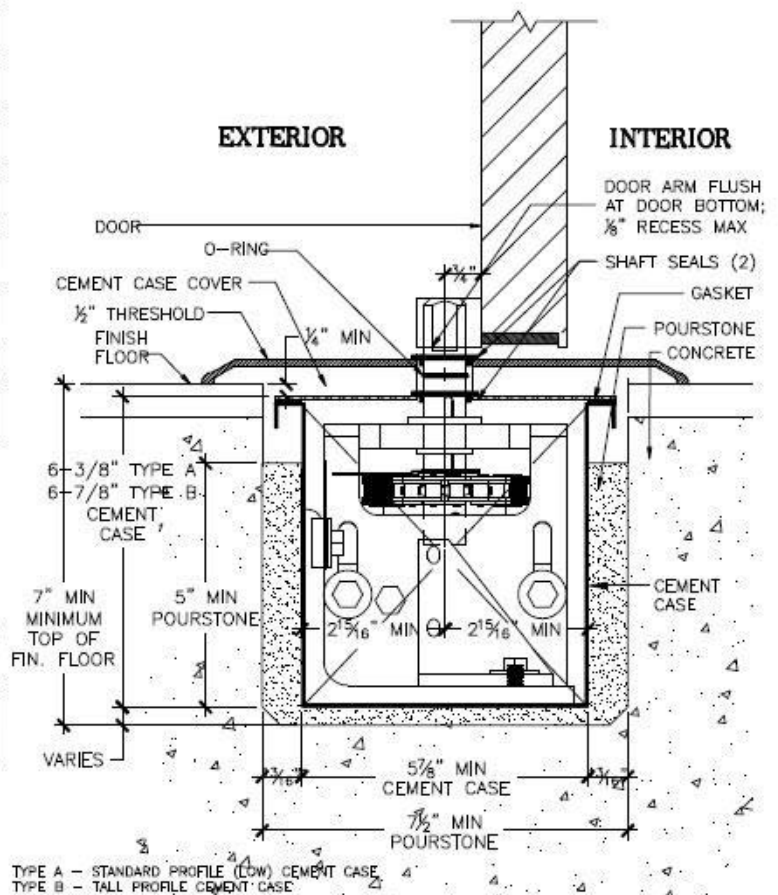


PLAN ①

SCALE = 1:20

NOTES:

1. SEE BLOCKOUT DRAWINGS FOR ALTERNATE FLOOR COVER OPTIONS (STONE, FLUSH, ETC.)
2. SEE "BOTTOM ARM" TAB AT WEBSITE FOR AVAILABLE STANDARD BOTTOM ARMS (OFFSET HUNG)
3. SEE "FLOOR BLOCKOUT" TAB AT WEBSITE FOR FLOOR BLOCKOUT DIMENSTIONS AND TEMPLATES
4. STANDARD ARM (ONLY) REQUIRES JAMB NOTCH FOR FULL CLOSING. SEE FLOOR BLOCKOUT DWGS.



SECTION ②
OFFSET PIVOT

SCALE = 1:4

SD-B101-HP