

OPCON

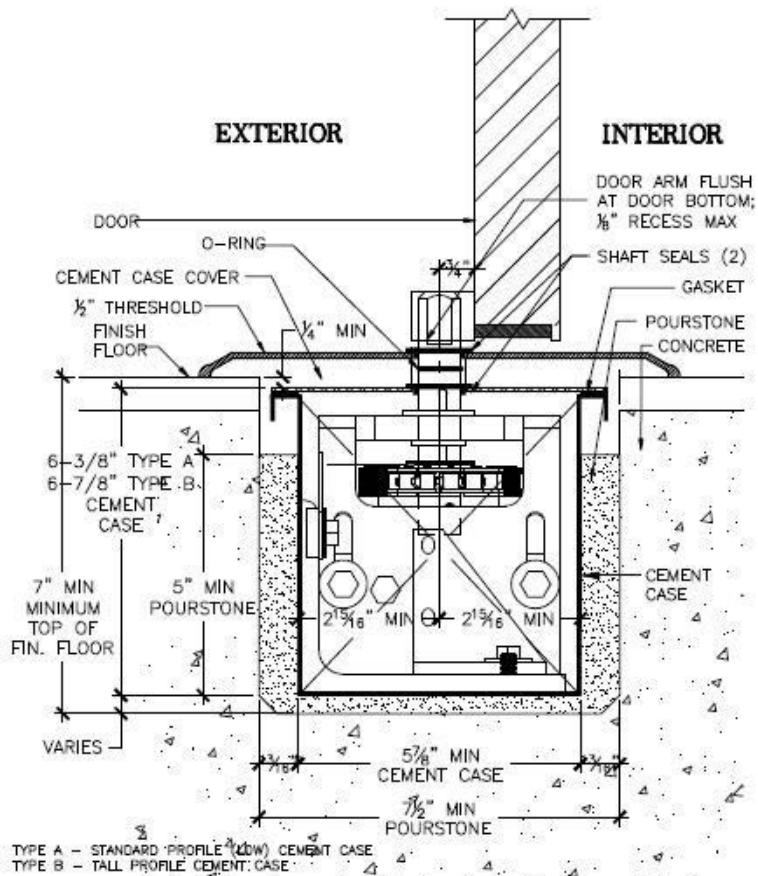
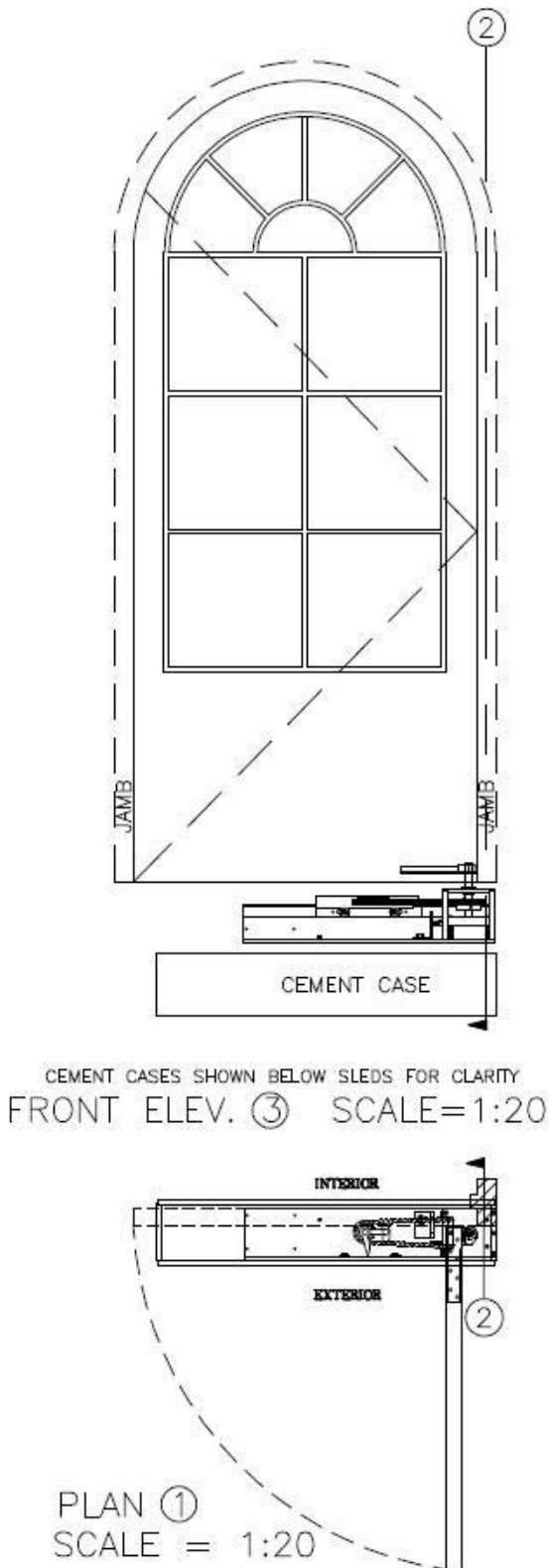
• CONVERT • CONCEAL • CONNECT

www.opconusa.com

(760) 720-3902

ARCH TOP (HISTORIC) DOOR: WOOD, BRONZE, ETC.

BUTT HUNG (HINGED) OFFSET WITH STANDARD OFFSET BOTTOM ARM



SECTION ②
OFFSET PIVOT

SCALE = 1:4

NOTES:

1. SEE BLOCKOUT DRAWINGS FOR ALTERNATE FLOOR COVER OPTIONS (STONE, FLUSH, ETC.)
2. SEE "BOTTOM ARM" TAB AT WEBSITE FOR AVAILABLE STANDARD BOTTOM ARMS (OFFSET HUNG)
3. SEE "FLOOR BLOCKOUT" TAB AT WEBSITE FOR FLOOR BLOCKOUT DIMENSTIONS AND TEMPLATES
4. STANDARD ARM (ONLY) REQUIRES JAMB NOTCH FOR FULL CLOSING. SEE FLOOR BLOCKOUT DWGS.

SD-B101-HS