

# OPCON

• CONVERT • CONCEAL • CONNECT

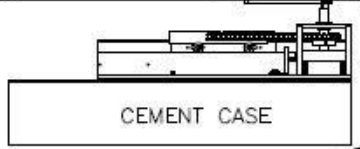
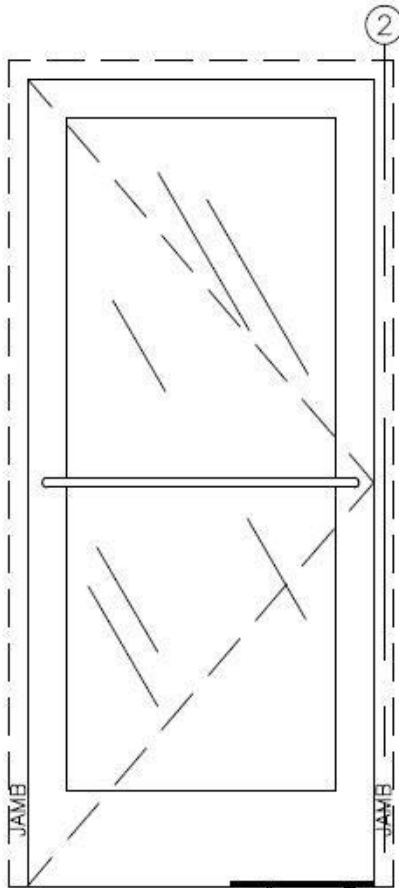
www.opconusa.com

(760) 720-3902

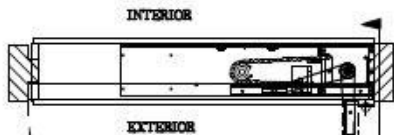
## STILE & RAIL DOOR

ALUMINUM, WOOD, STEEL, OR METAL CLAD

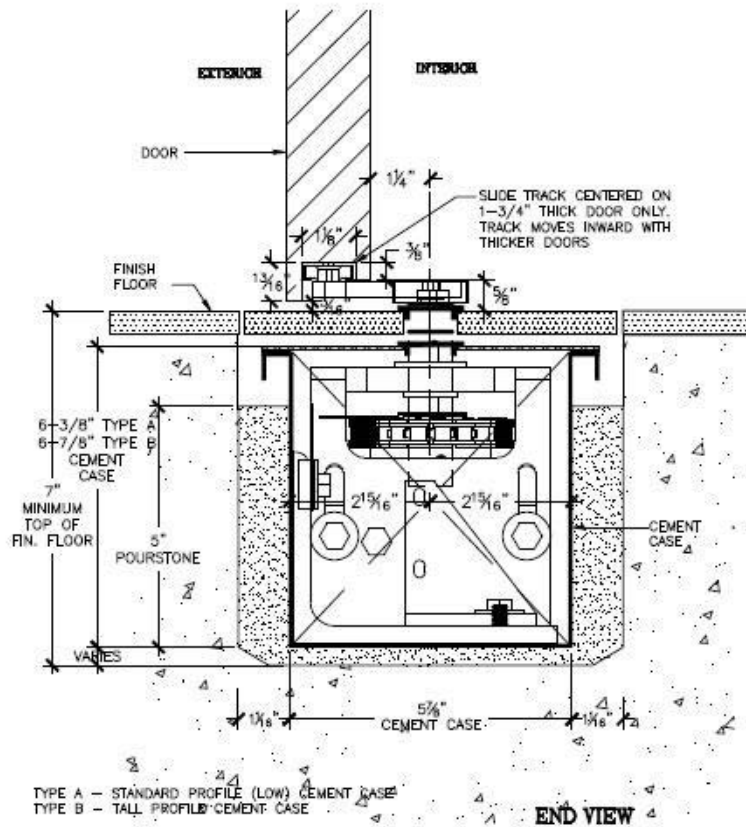
BUTT HUNG (HINGED) OFFSET WITH  
RIXSON #327 BOTTOM SLIDE ARM



CEMENT CASES SHOWN BELOW SLEDS FOR CLARITY  
FRONT ELEV. ③ SCALE = 1:20



PLAN ①  
SCALE = 1:20



TYPE A - STANDARD PROFILE (LOW) CEMENT CASE  
TYPE B - TALL PROFILE CEMENT CASE

END VIEW

SECTION ②  
OFFSET PIVOT

SCALE = 1:4

### NOTES:

1. SEE BLOCKOUT DRAWINGS FOR ALTERNATE FLOOR COVER OPTIONS (STONE, FLUSH, ETC.)
2. SEE "BOTTOM ARM" TAB AT WEBSITE FOR BOTTOM ARM DETAILS.
3. SEE "FLOOR BLOCKOUT" TAB AT WEBSITE FOR FLOOR BLOCKOUT DIMENSIONS & TEMPLATES
4. SEE "FIELD LAYOUT" TAB FOR DOOR PREP TEMPLATES.
5. CRITICAL THAT DIM. FROM INTERIOR FACE OF DOOR TO  $\varnothing$  OF SPINDLE BE HELD.

SD-B103-MS