

OPCON

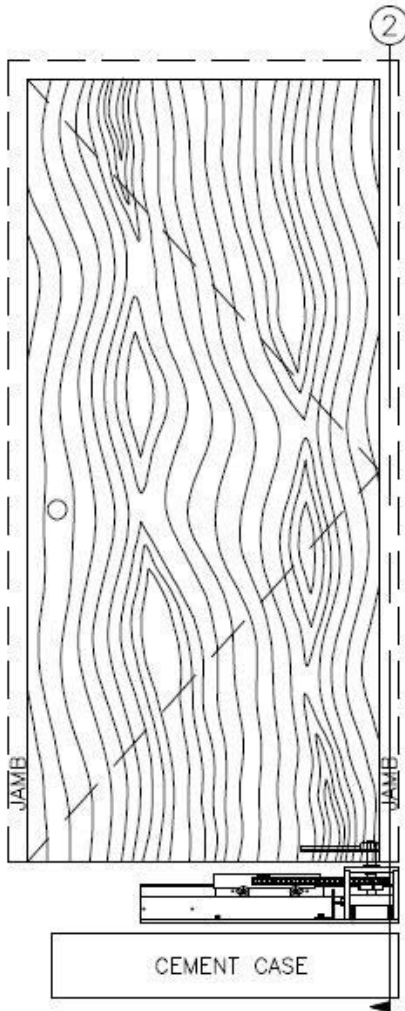
• CONVERT • CONCEAL • CONNECT

www.opconusa.com

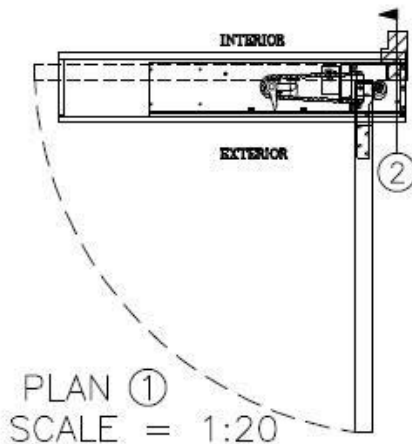
(760) 720-3902

WOODEN (FULL PANEL) DOOR

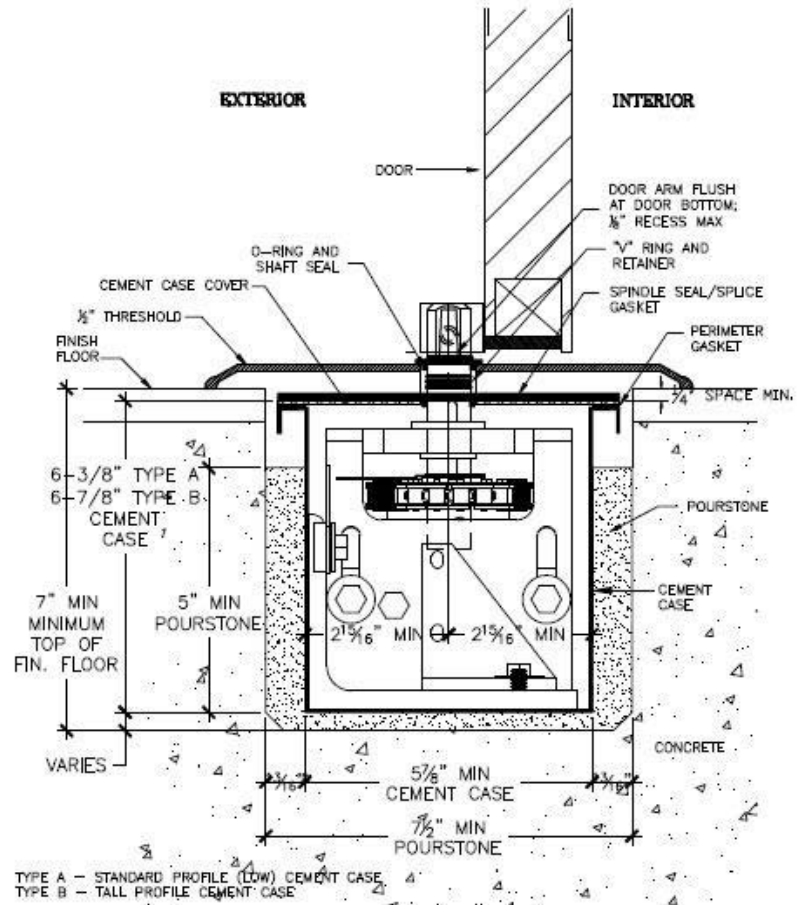
3/4" OFFSET PIVOT WITH STANDARD OFFSET BOTTOM ARM



CEMENT CASES SHOWN BELOW SLEDS FOR CLARITY
FRONT ELEV. ③ SCALE = 1:20



PLAN ①
SCALE = 1:20



TYPE A - STANDARD PROFILE (LOW) CEMENT CASE
TYPE B - TALL PROFILE CEMENT CASE

SECTION ②
OFFSET PIVOT

SCALE = 1:4

NOTES:

1. SEE BLOCKOUT DRAWINGS FOR ALTERNATE FLOOR COVER OPTIONS (STONE, FLUSH, ETC.)
2. SEE "BOTTOM ARM" TAB AT WEBSITE FOR AVAILABLE STANDARD BOTTOM ARMS (OFFSET HUNG)
3. SEE "FLOOR BLOCKOUT" TAB AT WEBSITE FOR FLOOR BLOCKOUT DIMENSIONS AND TEMPLATES

SD-P101-WS