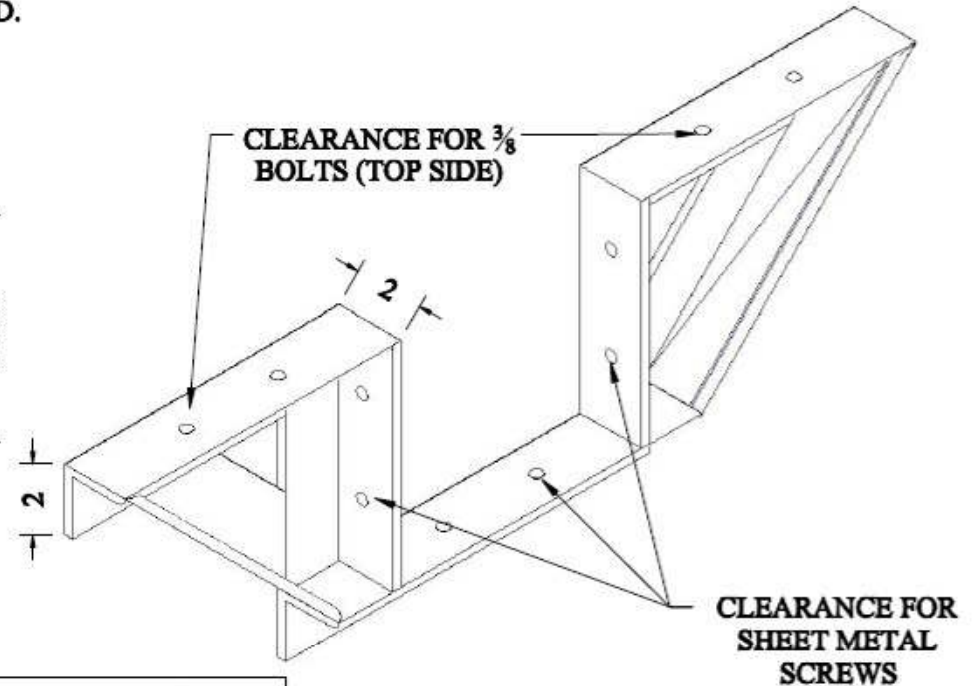
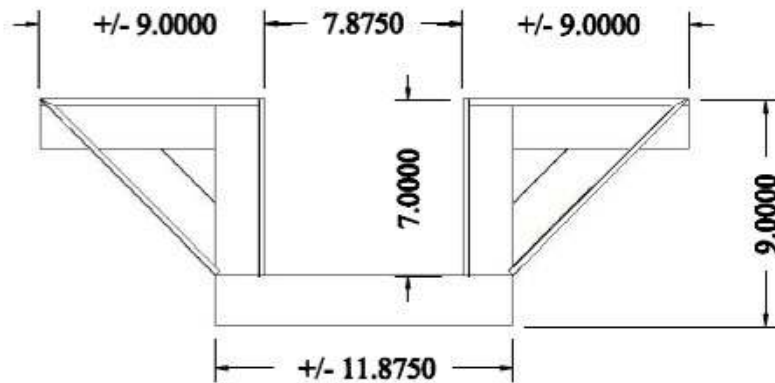
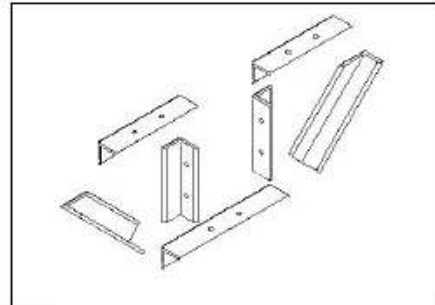


*** THIS IS AN OPTION ONLY. SITE CONDITIONS WILL DICTATE STRUCTURAL REQUIREMENTS. HOUSING MUST BE ADEQUATELY SUPPORTED FOR DOWNLOAD & LATERAL LOAD.**



*** WELD ASSEMBLY AS REQUIRED**



NOTES:

1. 2 x 2 x 1/4 STEEL ANGLES BOLTED TO UNDERSIDE OF CONCRETE OR OTHER FLOORING
2. ATTACH TO SHALLOW DEPTH CEMENT CASE HOUSING WITH SHEET METAL SCREWS. SEAL SCREWS WITH SILICONE.
3. THIS SUPPORT SYSTEM IS ONLY AN OPTION. SITE CONDITIONS WILL DICTATE THE BEST STRUCTURAL SUPPORT SYSTEM.

OPCON

• CONVERT • CONCEAL • CONNECT

www.opconusa.com (760) 720-3902

OPTION FOR STRUCTURAL SUPPORT UNDER SHALLOW DEPTH CEMENT CASE HOUSING

DWG# SDH-3

DATE: 12-02-2010

REV#

DATE: